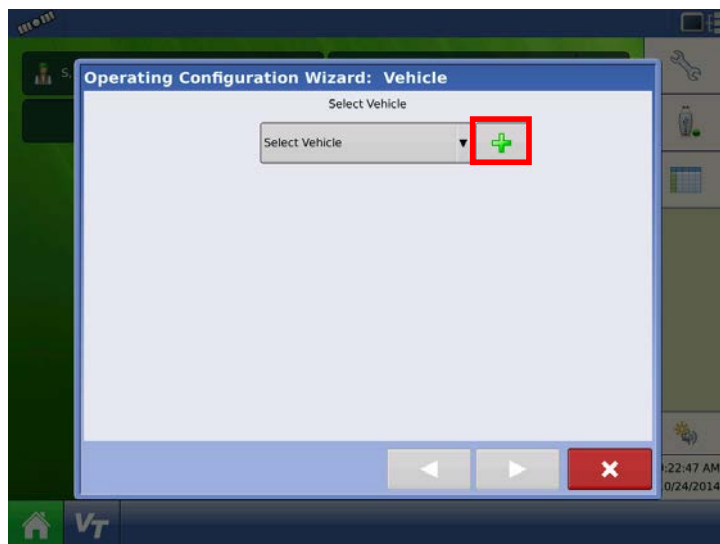


Press the “Wrench” icon to begin

Press “+” to begin setting up a new configuration

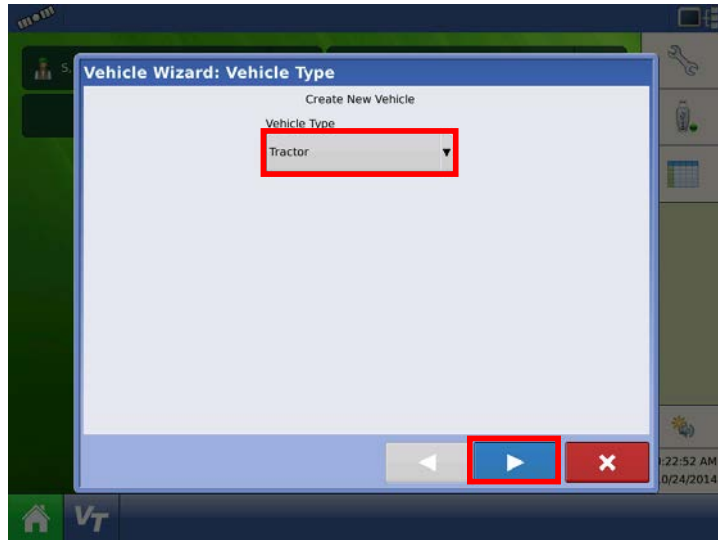


Select “Application”



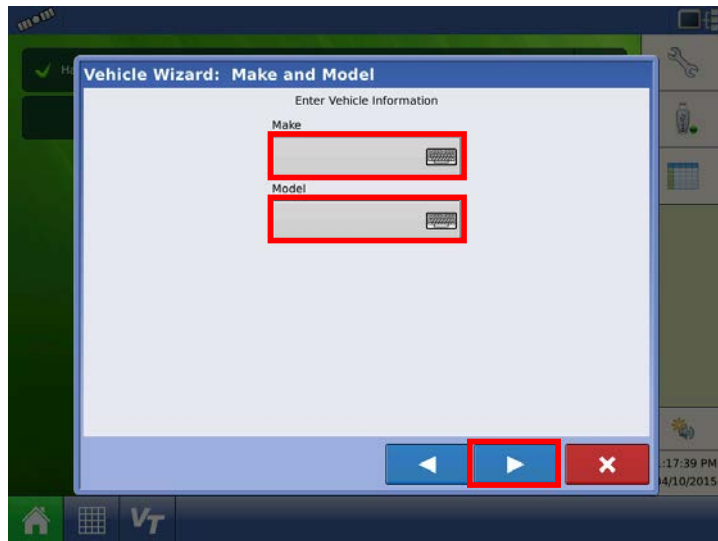
Press “+” to add a new vehicle

02/11/2015	JAS		Hardi North America	Drawer.:	
				Approver.:	
Date	Ini.	Correction	HARDI Trailer Controller Setup		

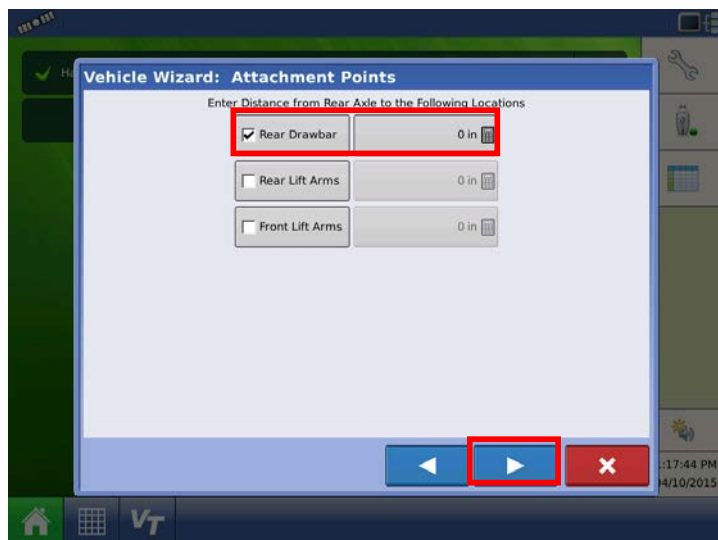


Highlight the drop down list and select "Tractor"

Press the right arrow



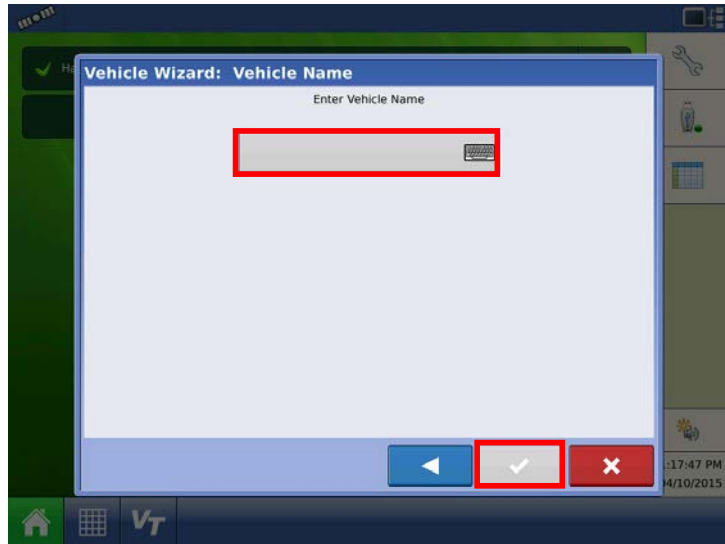
Enter the Tractor make and model followed by the right arrow



Enter in the distance from the rear axle of the tractor to the rear drawbar pin

Press the right arrow

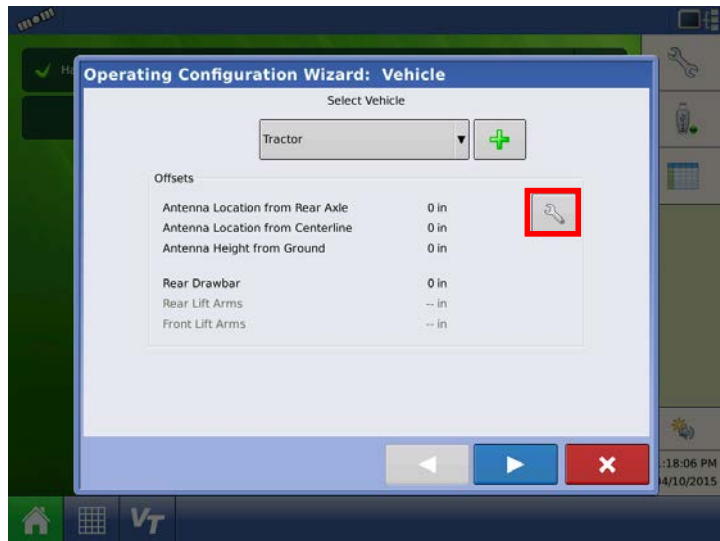
02/11/2015	JAS		<div>Hardi North America</div>  <div>HARDI Trailer Controller Setup</div>	Drawer.:	
				Approver.:	
Date	Ini.	Correction			



Type in a name for the Tractor configuration you have just created

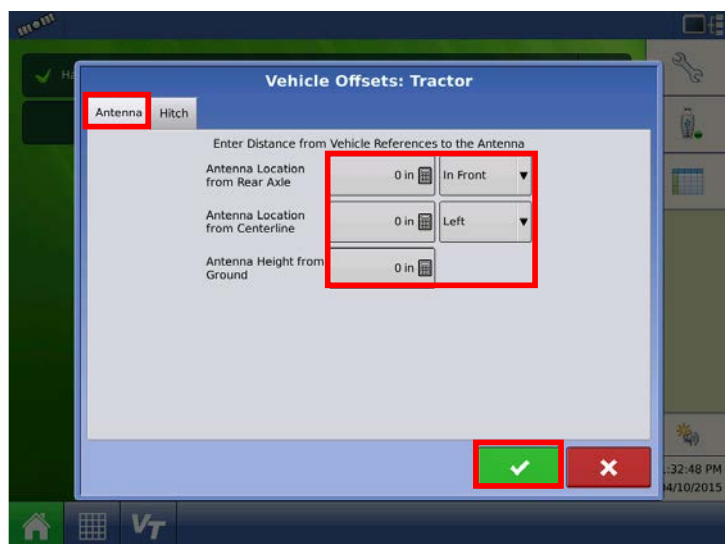
Once you have named the tractor, the checkbox on the bottom of the screen will turn green and allow you to press it.

Press the green checkbox




This screen displays the “Tractor” that you have just created

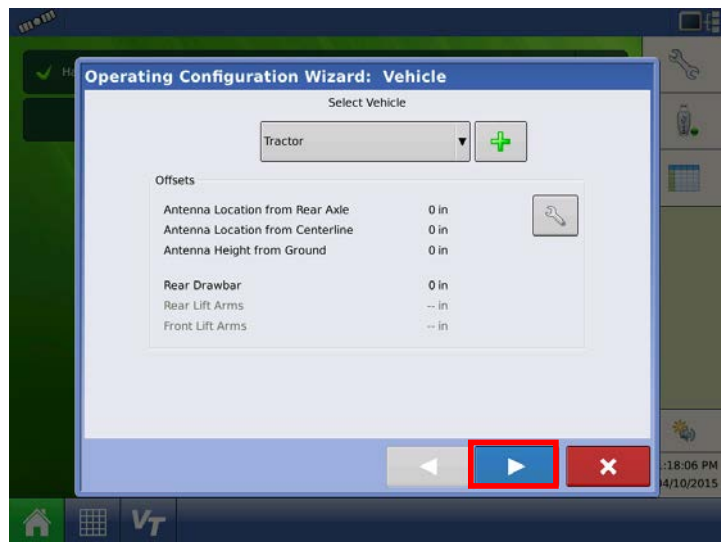
Press the wrench



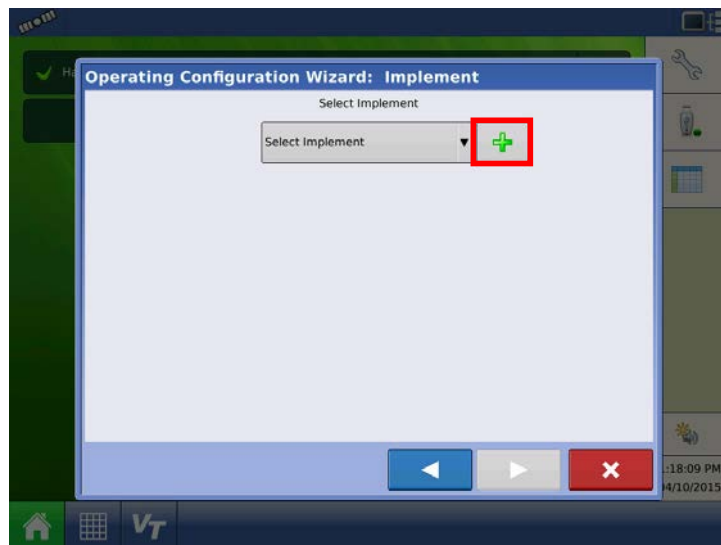
Set up the vehicle Antenna offsets from the antenna to the rear axle, center line of tractor, and finally the ground.

Press the green checkbox when you are done

02/11/2015	JAS		<div>Hardi North America</div>  <div>HARDI Trailer Controller Setup</div>	Drawer.:	
				Approver.:	
Date	Ini.	Correction			

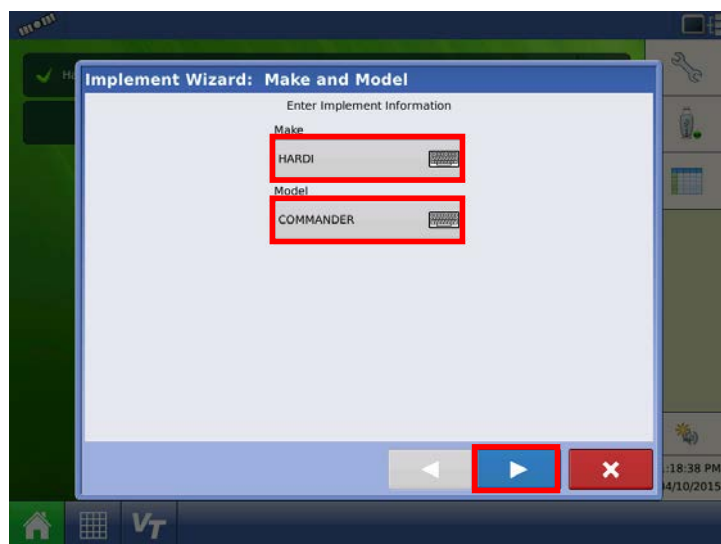


Press the right arrow



Next you will need to create the Implement

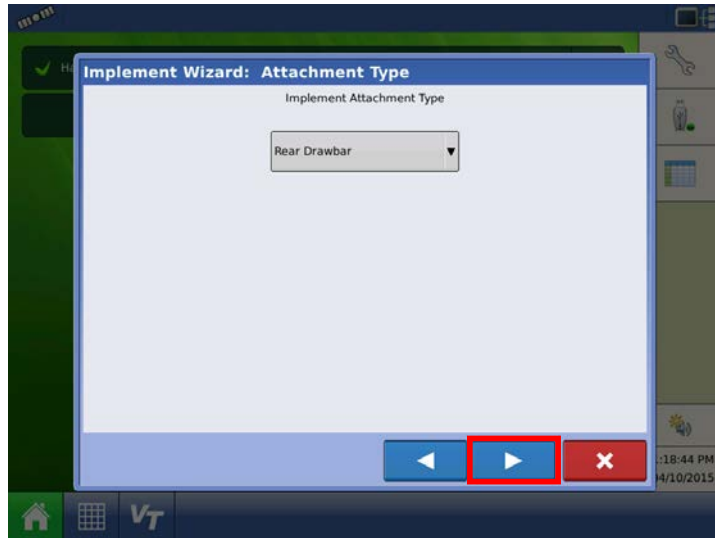
Press the “add” button



Enter the Make and Model of the sprayer

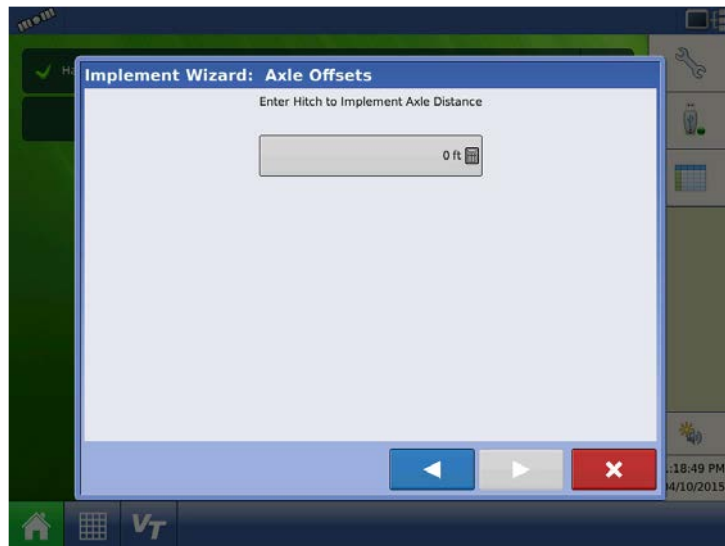
Press the right arrow

02/11/2015	JAS		Hardi North America  HARDI Trailer Controller Setup	Drawer.:	
				Approver.:	
Date	Ini.	Correction			



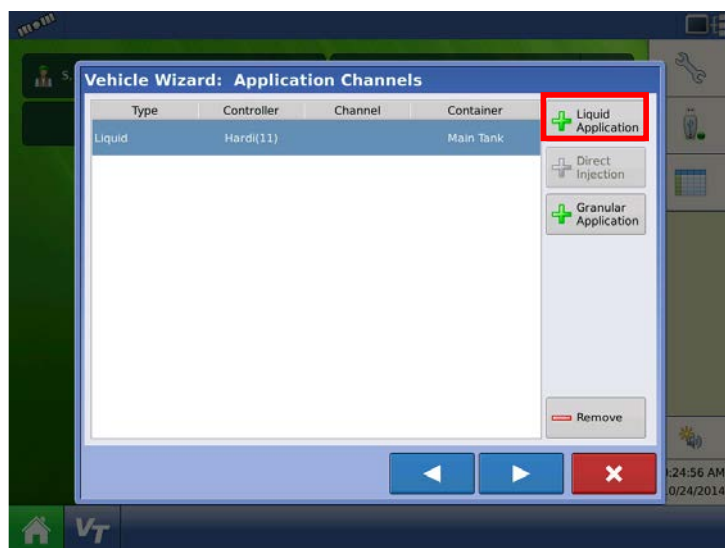
The Implement attachment type will be “Rear Drawbar”

Press the right arrow




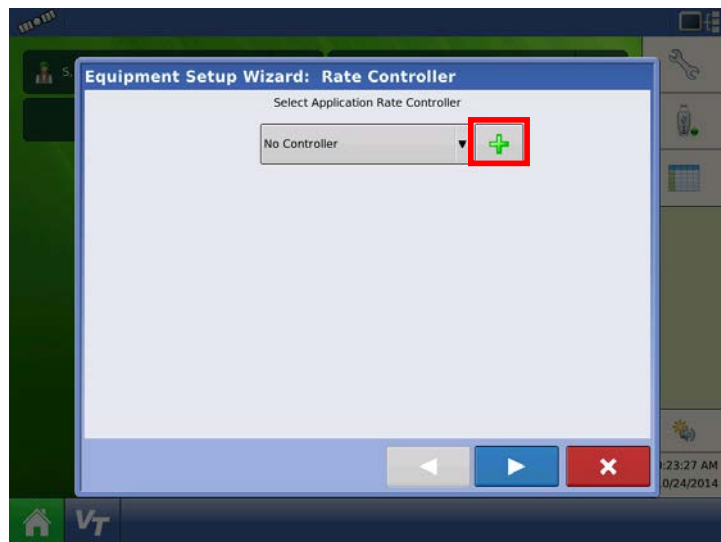
Enter in the distance from the center of the hitch pin to the center of the axle on the sprayer

RANGER 550/2000- 156”
NAVIGATOR 3000/3500/4000- 180”
NAVIGATOR 6000- 204”
COMMANDER 4500/5500/7000- 238”

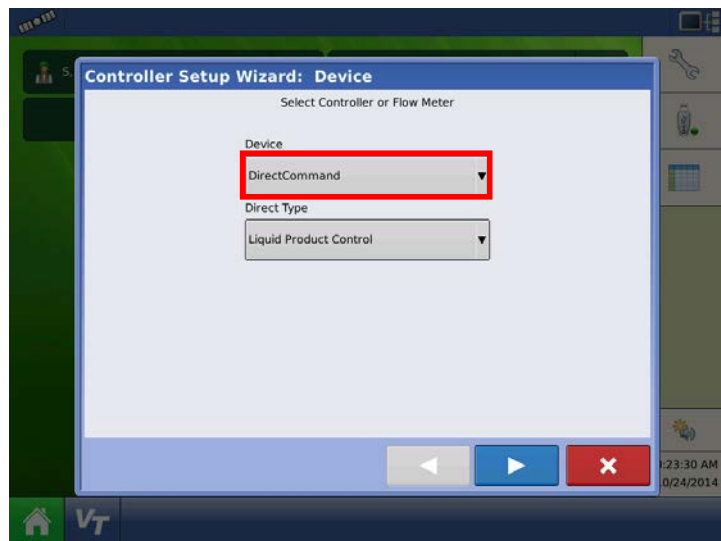


At this screen, press “Liquid Application”

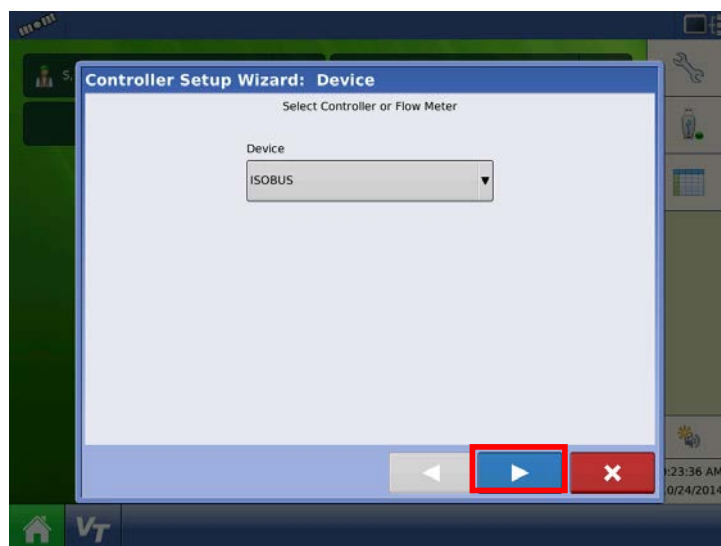
02/11/2015	JAS		Hardi North America	Drawer.:	
				Approver.:	
Date	Ini.	Correction	HARDI Trailer Controller Setup		




Press the “+” key to add a new controller

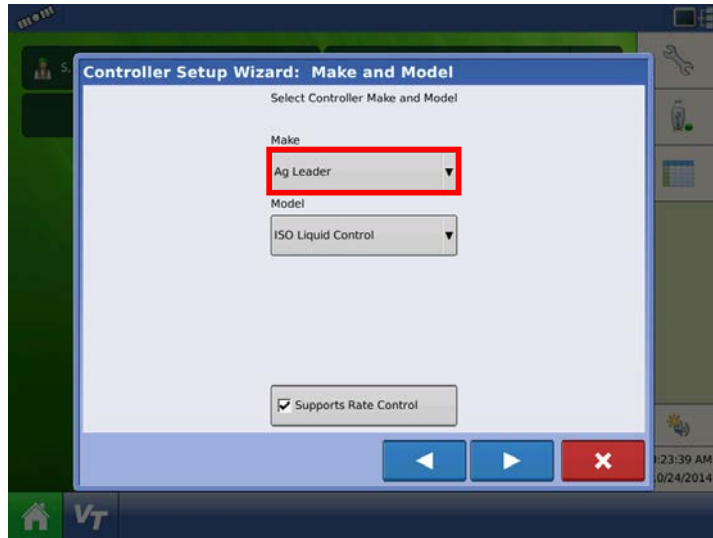


By default the HC9500 will show the information pictured on the left, change the device to “ISOBUS” by pressing the drop down arrow



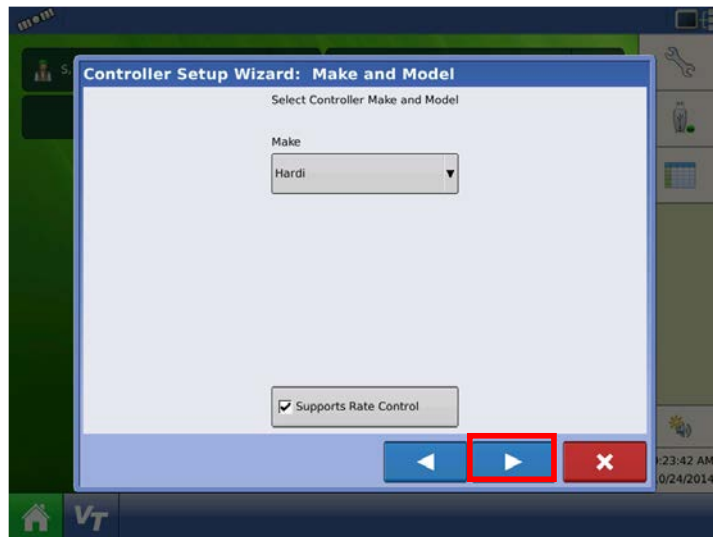
Press the right arrow

02/11/2015	JAS		<div>Hardi North America</div>  <div>HARDI Trailer Controller Setup</div>	Drawer.:	
				Approver.:	
Date	Ini.	Correction			

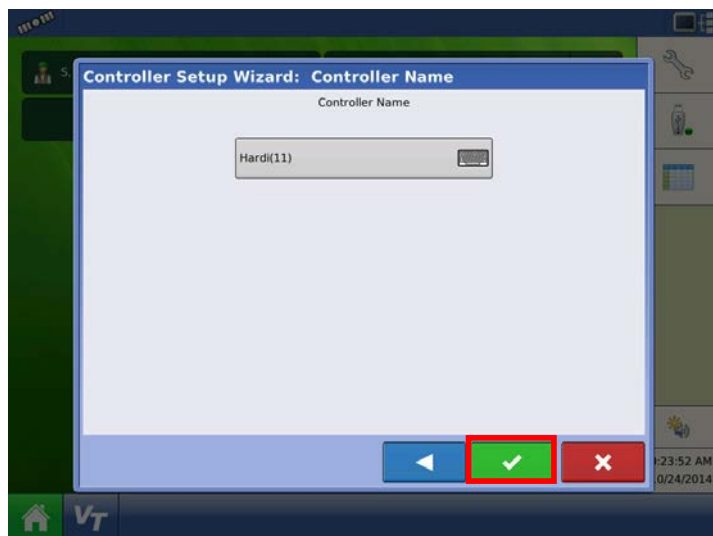


Change the “Make” to HARDI.

When you select HARDI, the Model option will disappear.




Press the right arrow

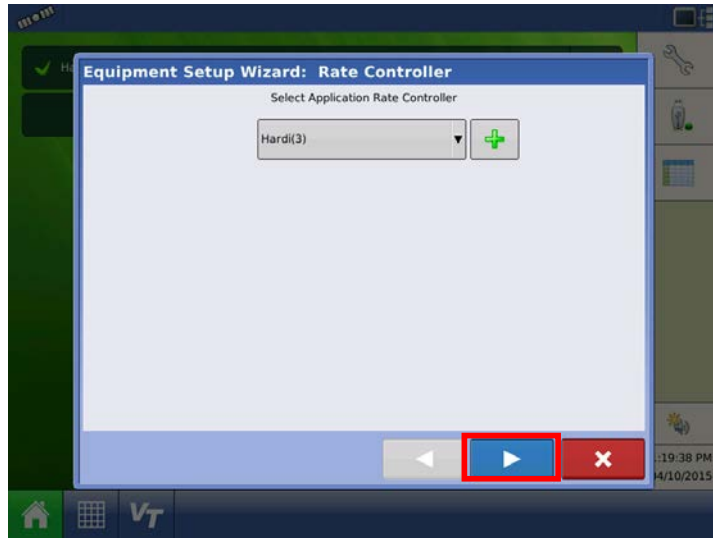


The suggested controller name will appear on this screen.

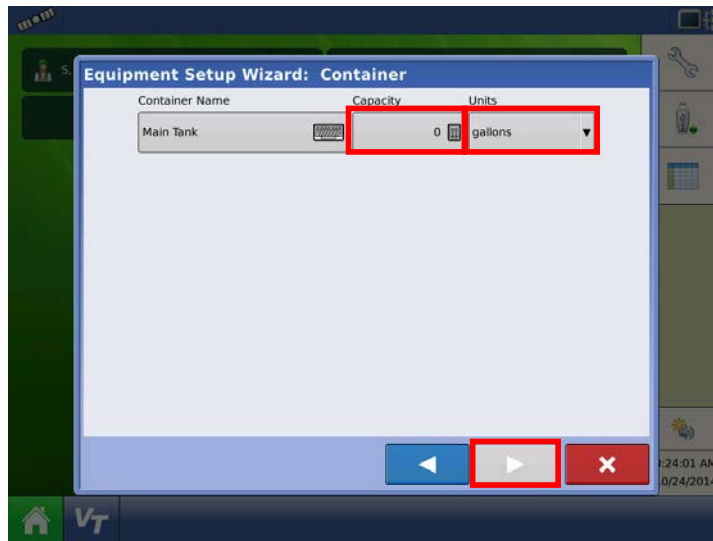
If you have set up multiple configurations on the same display it will add a number in parenthesis behind the name. (This is not common).

Press the green check box

02/11/2015	JAS		Hardi North America  HARDI Trailer Controller Setup	Drawer.:	
				Approver.:	
Date	Ini.	Correction			



Press the right arrow to continue



Next setup the main tank. Change the capacity to match the machine and make sure the controlling units is in Gallons.

RANGER- 550 gal

NAVIGATOR 3000- 800 gal

NAVIGATOR 3500- 1000 gal

NAVIGATOR 4000- 1200 gal

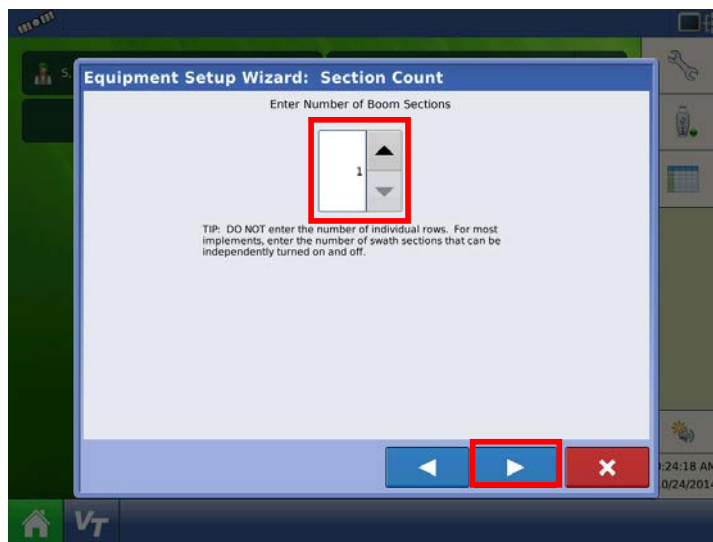
NAVIGATOR 6000- 1600 gal

COMMANDER 4500- 1200 gal

COMMANDER 5500- 1600 gal

COMMANDER 7000- 2000 gal

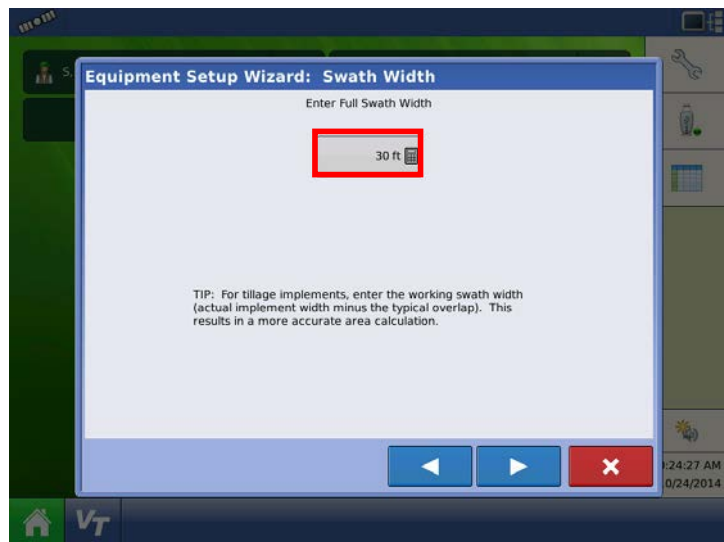
Press the right arrow when finished



Select the number of boom sections on the machine

Press the right arrow when finished

02/11/2015	JAS		Hardi North America	Drawer.:	
				Approver.:	
Date	Ini.	Correction	HARDI Trailer Controller Setup		



Next, enter in the swath width of the boom.
Press the calculator to enter in the correct value.



Enter the correct value and press the green check box



Press the right arrow

02/11/2015	JAS		Hardi North America	Drawer.:	
				Approver.:	
Date	Ini.	Correction	HARDI Trailer Controller Setup		

Equipment Setup Wizard: Section Configuration

Enter Boom Section Widths from Left to Right

Section	Swath Width (ft)
1	20.0000
2	20.0000
3	20.0000
4	20.0000
5	20.0000
6	20.0000

TIP: The implement is divided into equal section sizes by default. To modify the sections, press the keypad button for each section that needs to be changed.

Navigation buttons: Left Arrow, Right Arrow (highlighted), Close (X).

Ensure that the swath width for each section is correct before pressing the right arrow to continue

Equipment Setup Wizard: Application Point Offset

Enter Distance from Rear Axle to Application Point

0 ft Behind

Navigation buttons: Left Arrow, Green Checkmark (highlighted), Close (X).

Enter in the distance from the rear axle to the application point

Once you enter in the value, press the green check box that will appear


Vehicle Wizard: Application Channels

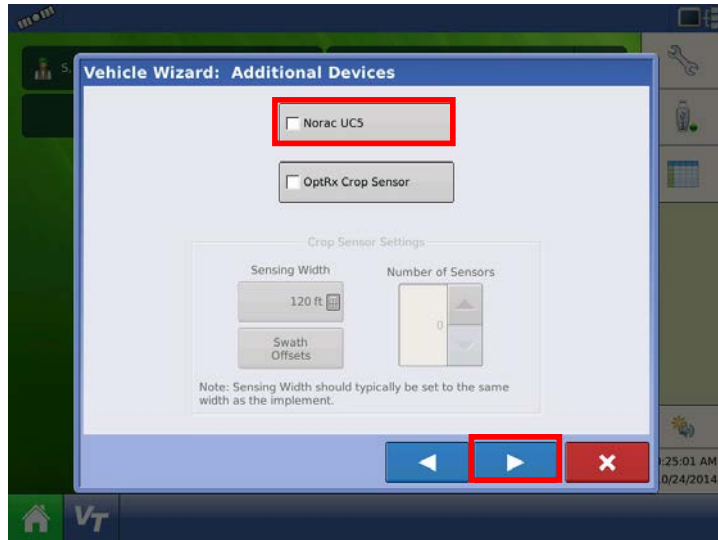
Type	Controller	Channel	Container
Liquid	Hardi(11)		Main Tank

Buttons: Liquid Application, Direct Injection, Granular Application, Remove.

Navigation buttons: Left Arrow, Right Arrow (highlighted), Close (X).

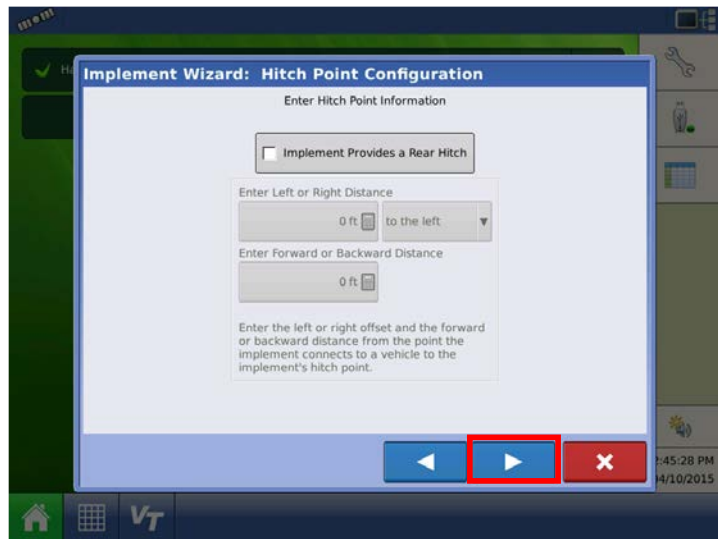
At the Application Channels screen, press the Right Arrow

02/11/2015	JAS		Hardi North America	Drawer.:	
				Approver.:	
Date	Ini.	Correction	HARDI Trailer Controller Setup		

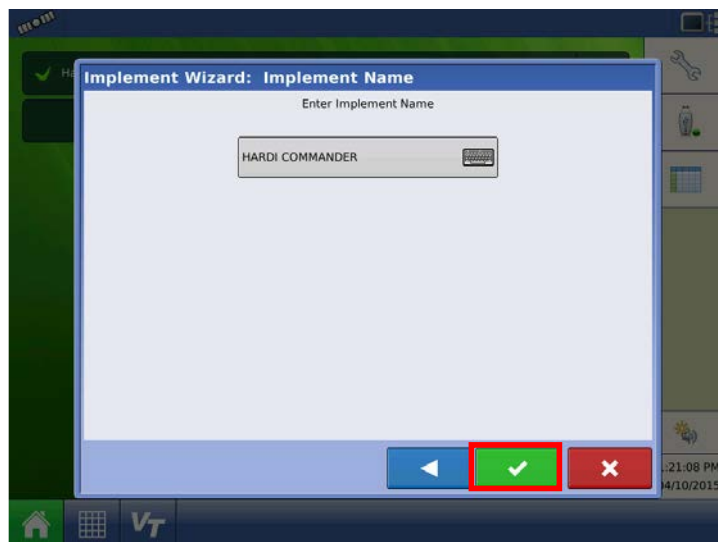


Mark the check box next to NORAC if the machine is equipped with one


Press the right arrow

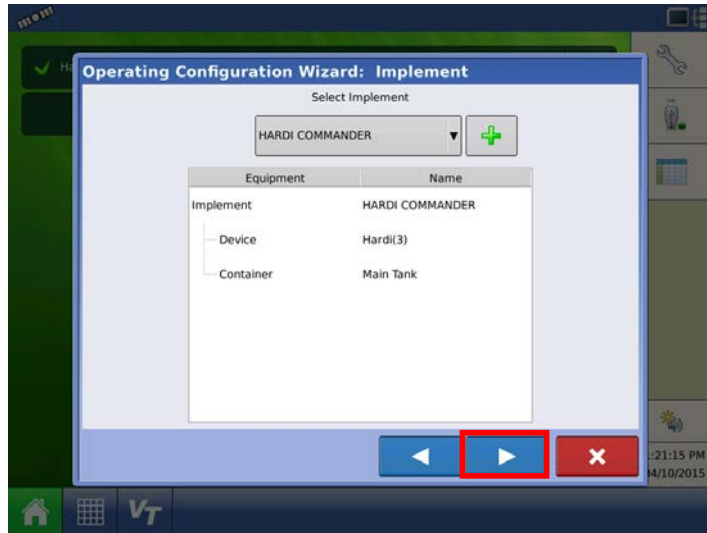


Press the right arrow as the sprayer will not provide a rear hitch point

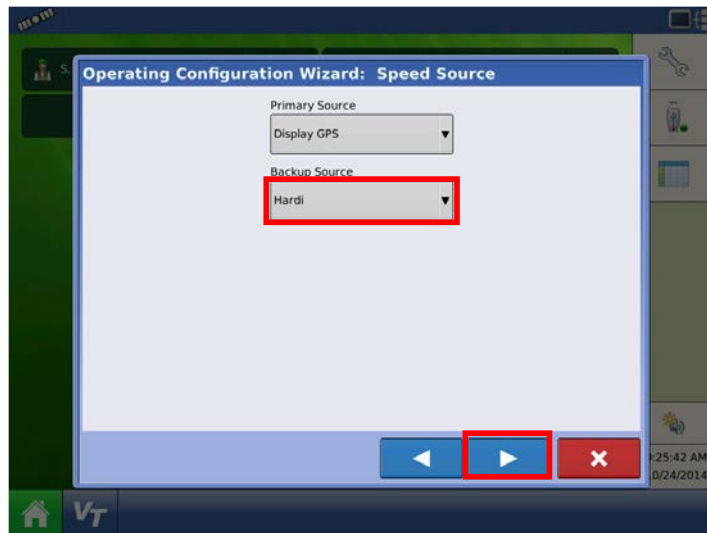


Check that the suggested vehicle name is correct and press the green check box to proceed.

02/11/2015	JAS		<div>Hardi North America</div> <div>  </div> <div>HARDI Trailer Controller Setup</div>	Drawer.:	
				Approver.:	
Date	Ini.	Correction			

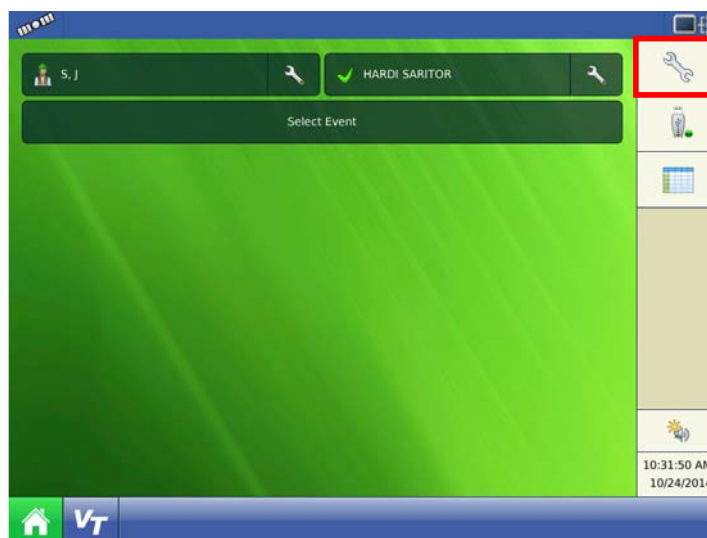


Press the right arrow



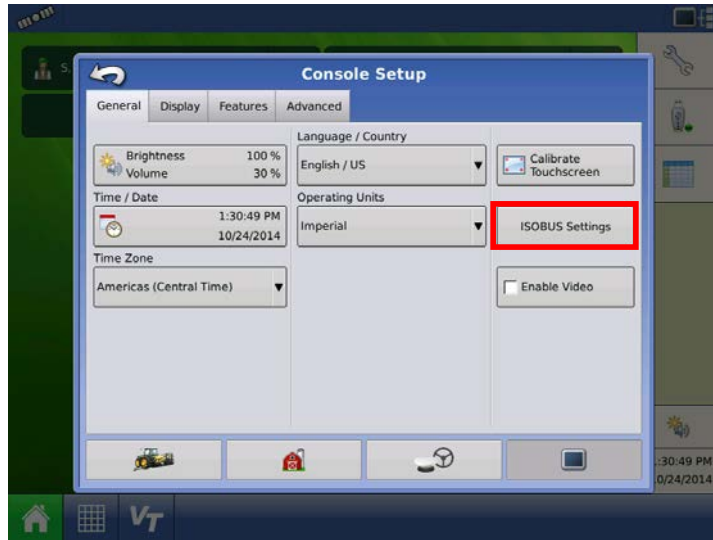
The primary speed source will be GPS; the backup source will need to be changed to HARDI.

Press the right arrow



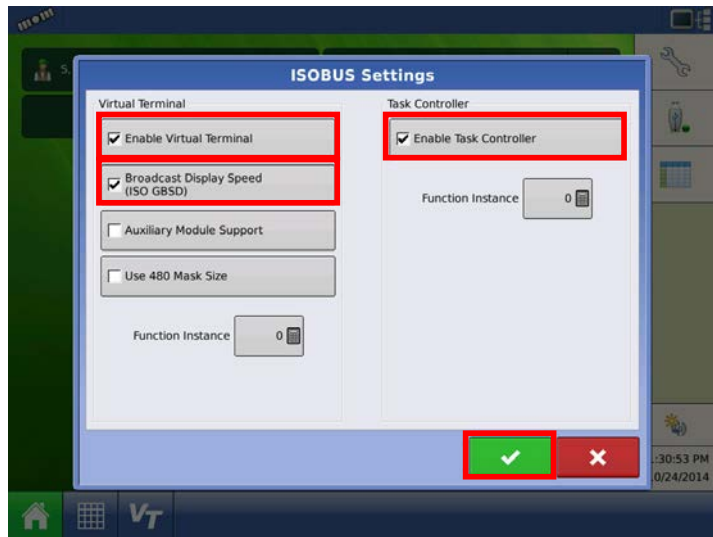
Press the wrench

02/11/2015	JAS		Hardi North America  HARDI Trailer Controller Setup	Drawer.:	
				Approver.:	
Date	Ini.	Correction			



Press the display tab

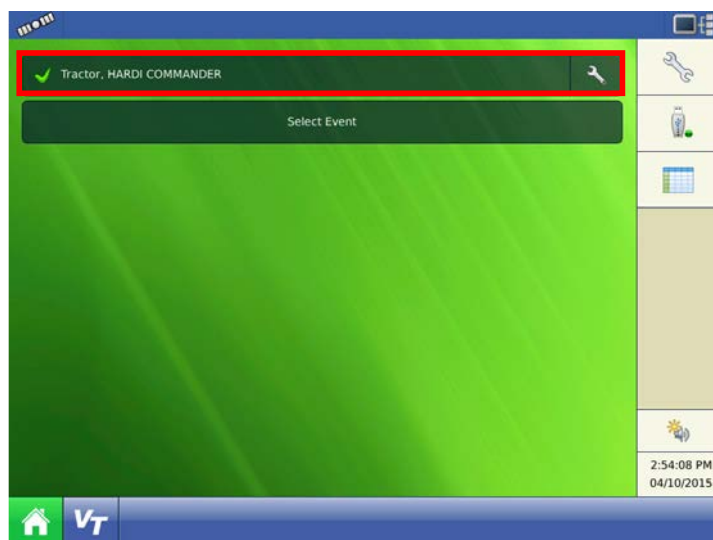
Press "ISOBUS Settings"



Make sure that the appropriate check boxes are checked:

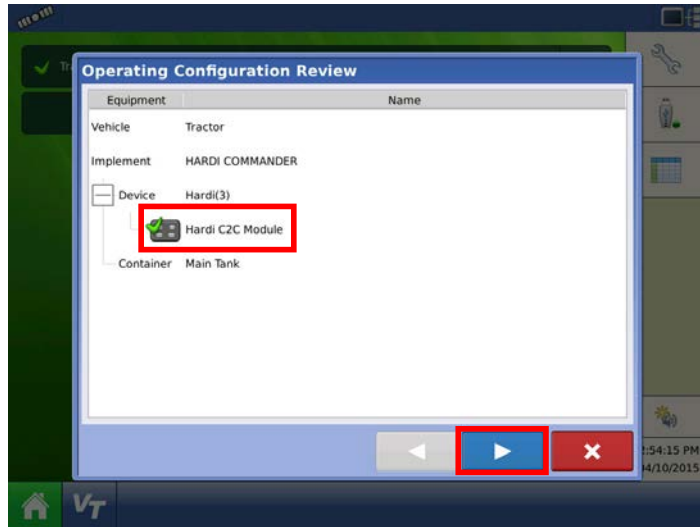
- Enable Virtual Terminal
- Broadcast Display Speed
- Enable Task Controller

Press the green check box when finished and navigate back to the home screen



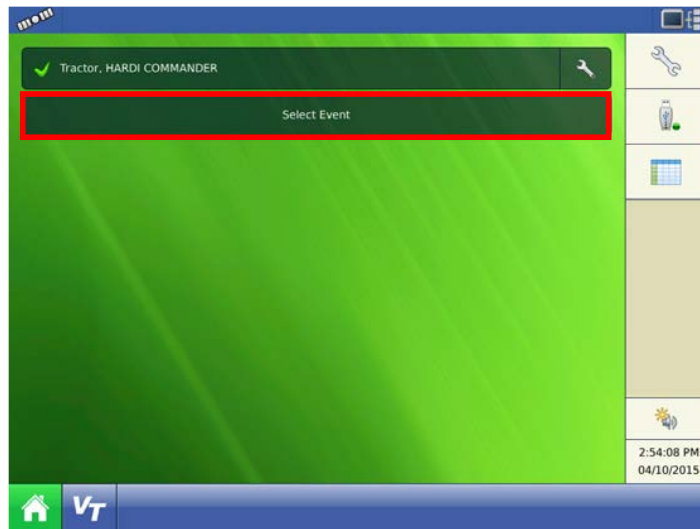
Make sure that the machine configuration that you have created is in the top window. The first time setting up the machine it will usually say "Guidance"

02/11/2015	JAS		Hardi North America  HARDI Trailer Controller Setup	Drawer.:	
				Approver.:	
Date	Ini.	Correction			

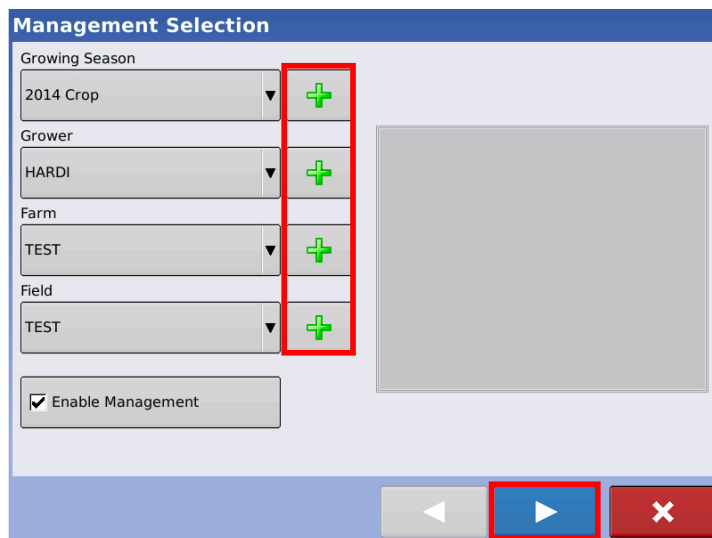


When you select the configuration you created, be sure that all the modules have a green check box next to them

Press the right arrow




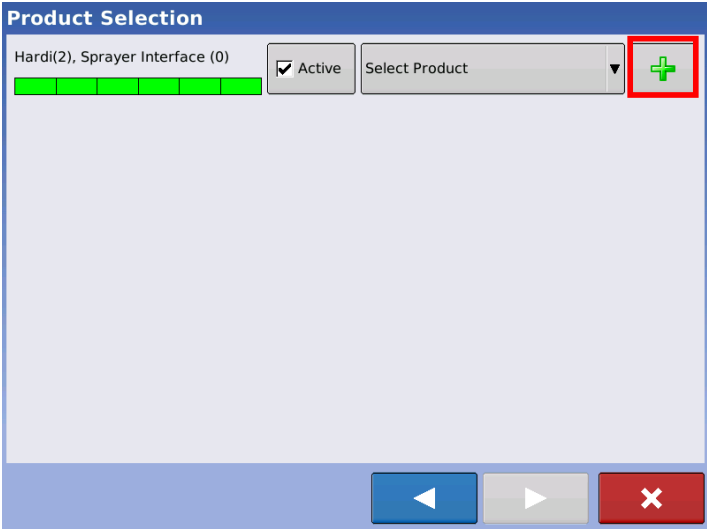

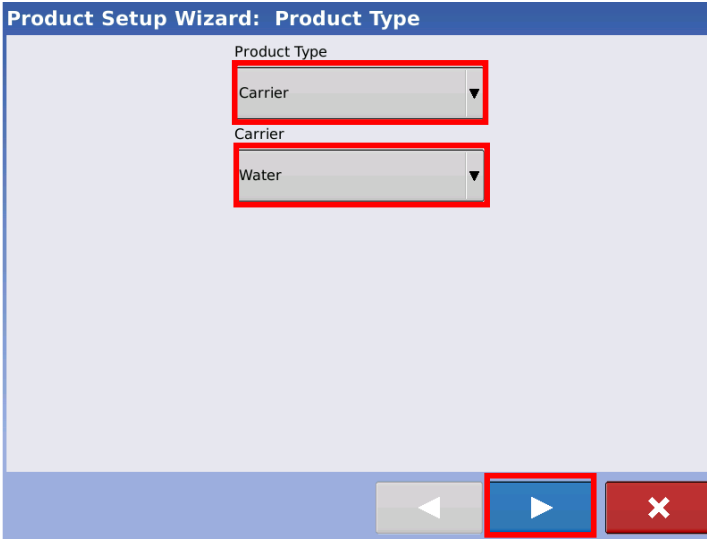
Press "Select Event"



Enter in the information to the left under each of the Grower, Farm, and Field windows by pressing the appropriate "+" key

Once these are all filled in, press the right arrow

02/11/2015	JAS		Hardi North America 	Drawer.:	
				Approver.:	
Date	Ini.	Correction	HARDI Trailer Controller Setup		

	<p>Press the “+” key to create a product</p>
	<p>Select “Application Product”</p>
	<p>Change the “Product Type” to “Carrier”</p> <p>Once the lower window changes to “Carrier” select “Water” if it has not defaulted to it already</p> <p>Press the right arrow</p>

02/11/2015	JAS		<div>Hardi North America</div>  <div>HARDI Trailer Controller Setup</div>	Drawer.:	
				Approver.:	
Date	Ini.	Correction			

Product Setup Wizard: Units

Select Product Units

Units

gallons

Navigation buttons: Left arrow, Right arrow (highlighted), Cancel (X)

Change the controlling units to “Gallons”

Press the right arrow

Product Setup Wizard: Product Name

Product Name

Water

Navigation buttons: Left arrow, Green checkmark (highlighted), Cancel (X)

Press the green check box

Product Selection

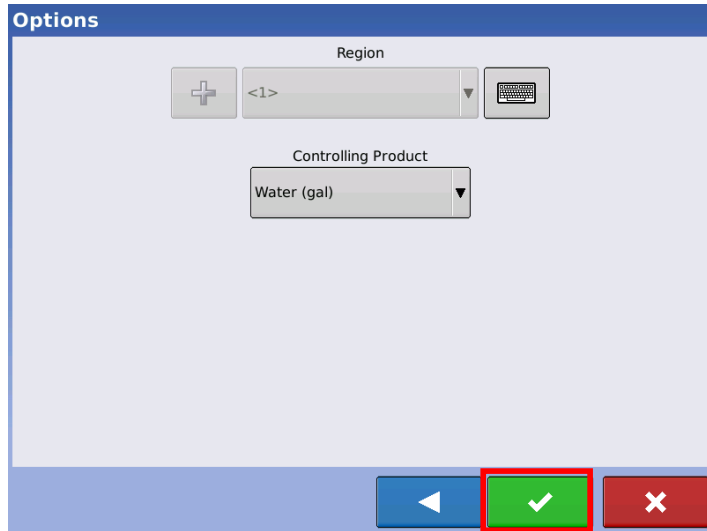
Hardi(2), Sprayer Interface (0)

☒ Active

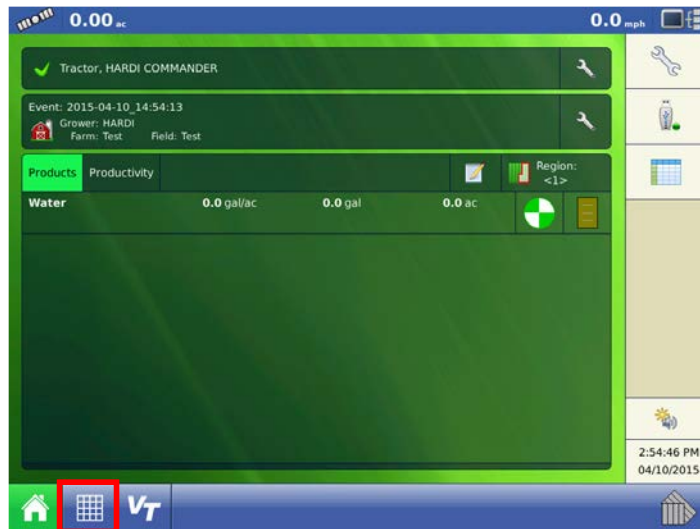
Water

Navigation buttons: Left arrow, Right arrow (highlighted), Cancel (X)

Press the right arrow



Press the green check box



The display should look very similar to the one to the left

Press the mapping tab



Your screen should look similar to the one on the left

If you have NORAC you should see some sensor data

Make sure the HARDI boxes are in the lower left/right

NOTE: If the lower left/right corners of the display are blank, press each of the four blank areas individually to bring up a new window allowing you to select the function you want setup. This will be the case with display SW 6.0 or later.

02/11/2015	JAS		Hardi North America	Drawer.:	
				Approver.:	
Date	Ini.	Correction	HARDI Trailer Controller Setup		