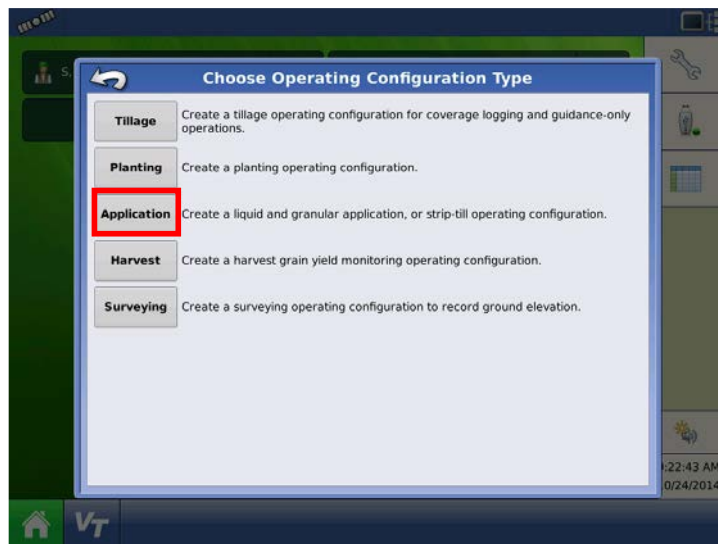
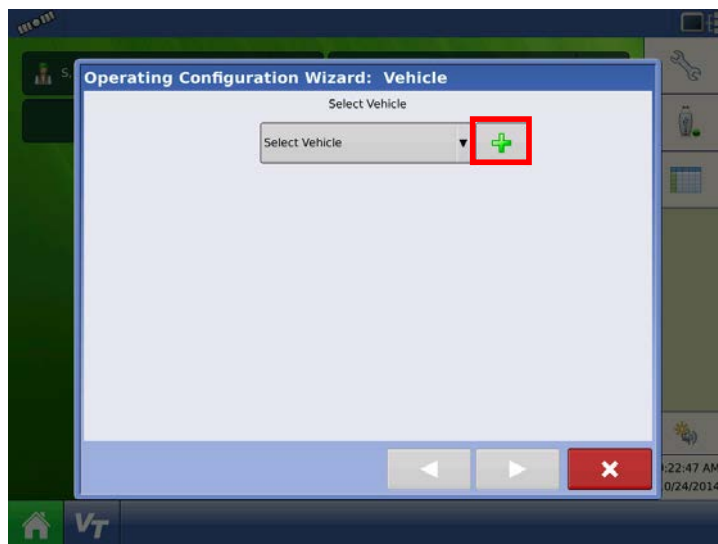


Press the “Wrench” icon to begin

Press “+” to begin setting up a new configuration

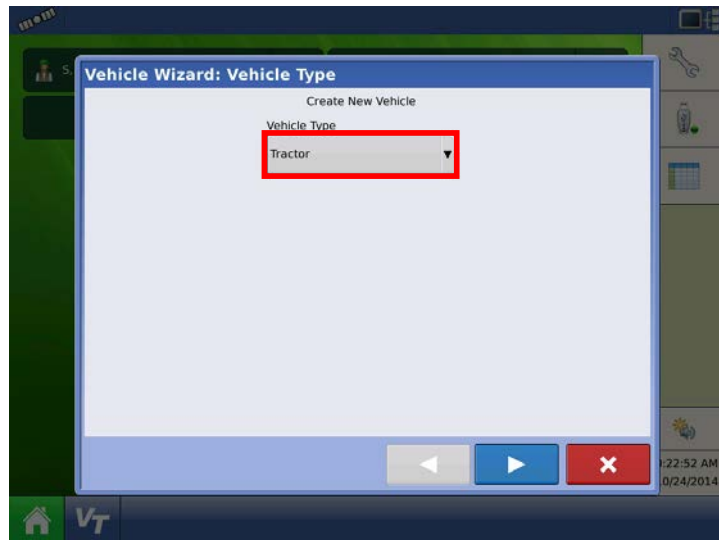


Select “Application”

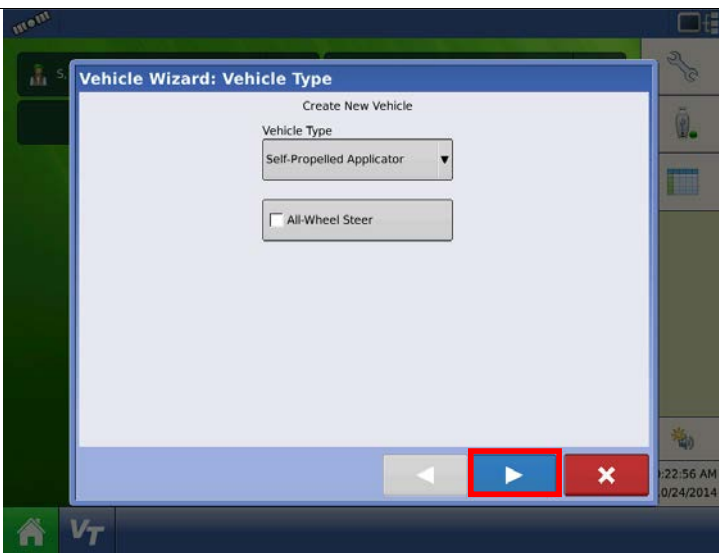


Press “+” to add a new vehicle

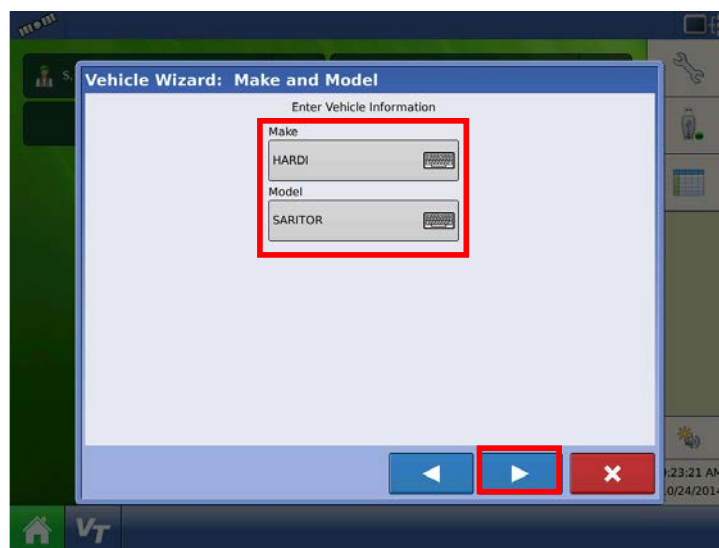
02/11/2015	JAS		<div>Hardi North America</div>  <div>HARDI SP Controller Setup</div>	Drawer.:	
				Approver.:	
Date	Ini.	Correction			



Highlight the drop down list and select “Self-Propelled Applicator”



Press the right arrow

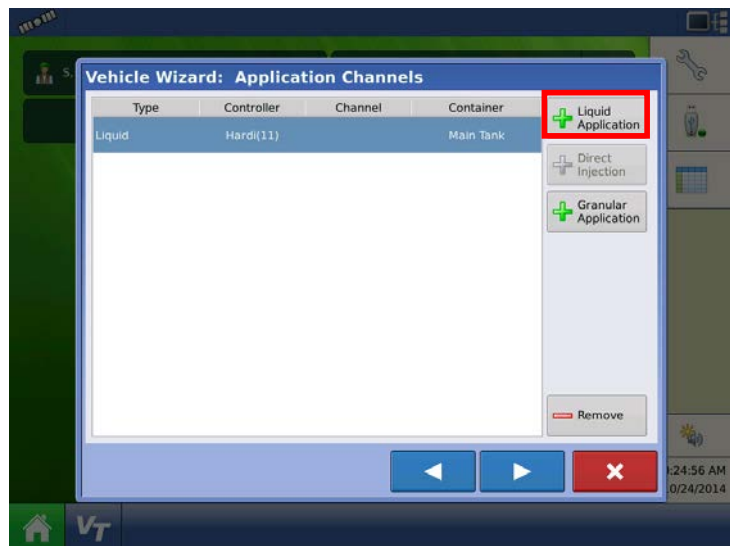


Enter in the Vehicle make and model.

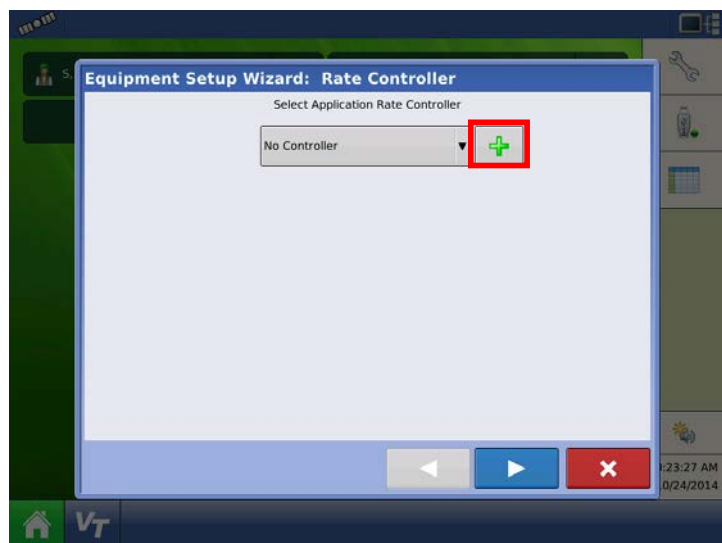
Use the caps lock button on the keypad to enter in both HARDI and the model in uppercase letters.

Press the right arrow when finished

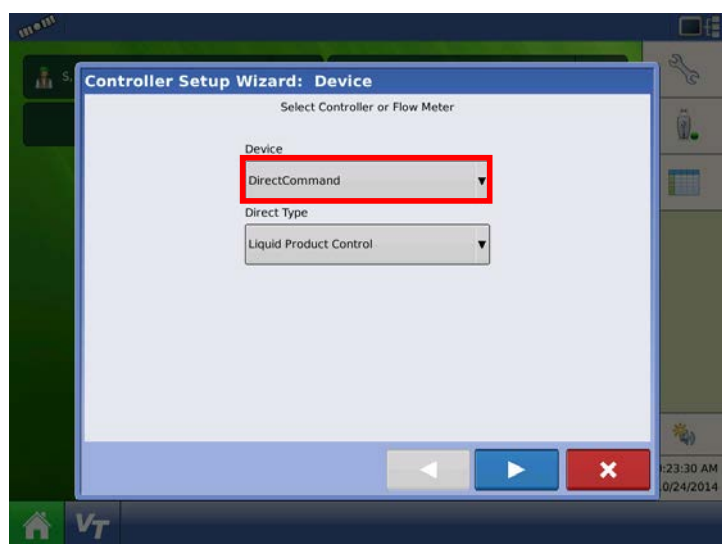
02/11/2015	JAS		Hardi North America	Drawer.:	
				Approver.:	
Date	Ini.	Correction	HARDI SP Controller Setup		



At this screen, press “Liquid Application”

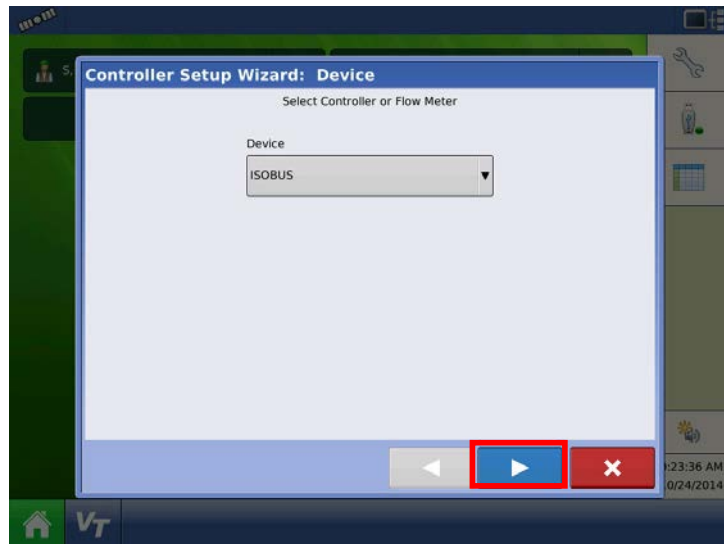


Press the “+” key to add a new controller

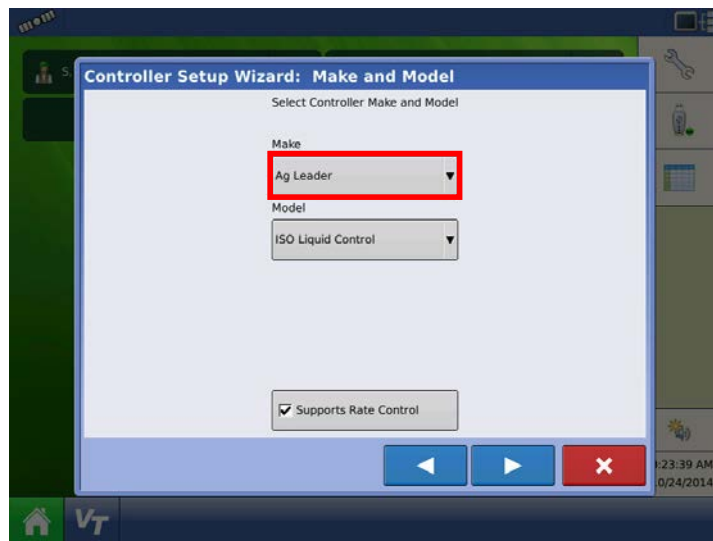


By default the HC9500 will show the information pictured on the left, change the device to “ISOBUS” by pressing the drop down arrow

02/11/2015	JAS		Hardi North America  HARDI SP Controller Setup	Drawer.:	
				Approver.:	
Date	Ini.	Correction			

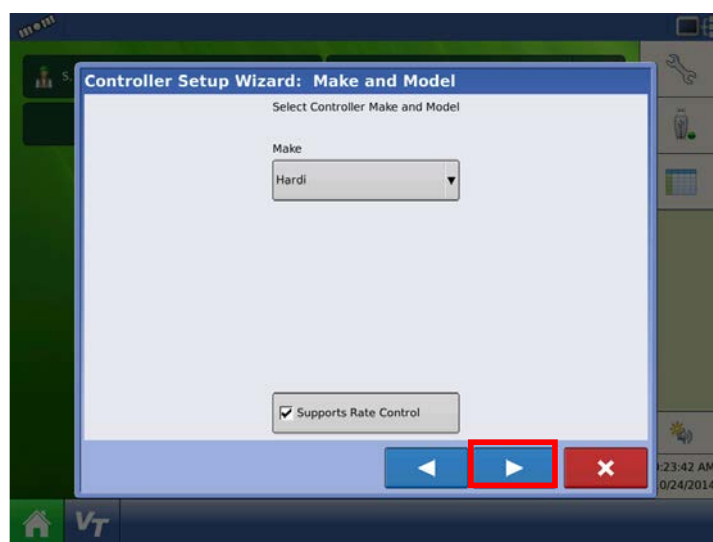


Press the right arrow



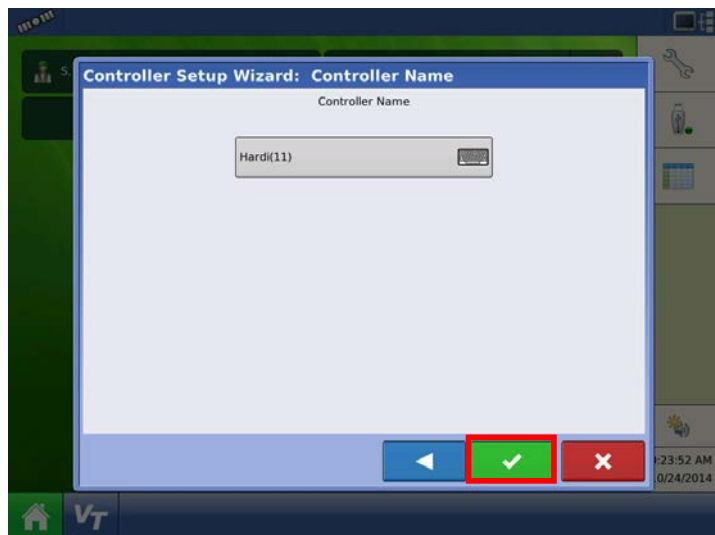
Change the "Make" to HARDI.

When you select HARDI, the Model option will disappear.



Press the right arrow

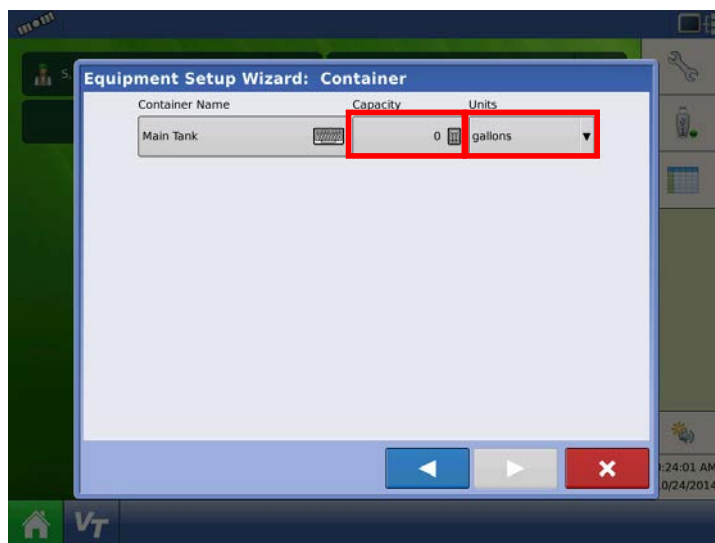
02/11/2015	JAS		Hardi North America	Drawer.:	
				Approver.:	
Date	Ini.	Correction	HARDI SP Controller Setup		



The suggested controller name will appear on this screen.

If you have set up multiple configurations on the same display it will add a number in parenthesis behind the name. (This is not common).

Press the green check box



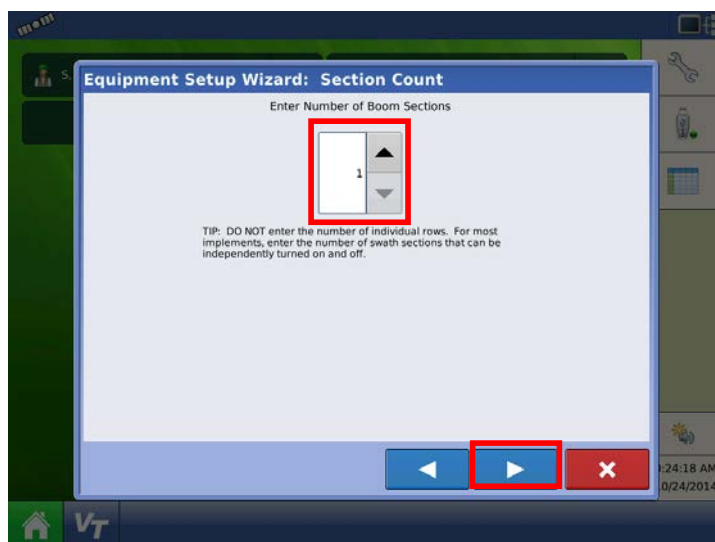
Next setup the main tank. Change the capacity to match the machine and make sure the controlling units is in Gallons.

Presidio- 700 gal

Saritor 4000- 1100 gal

Saritor 5000- 1300 gal

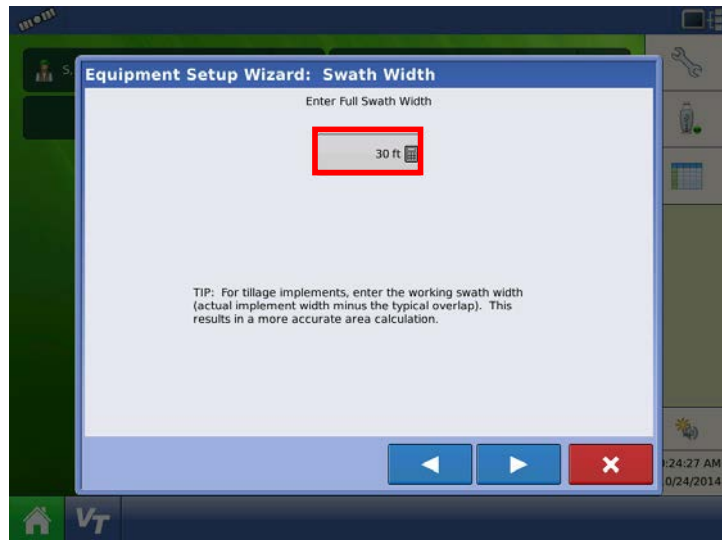
Press the right arrow when finished



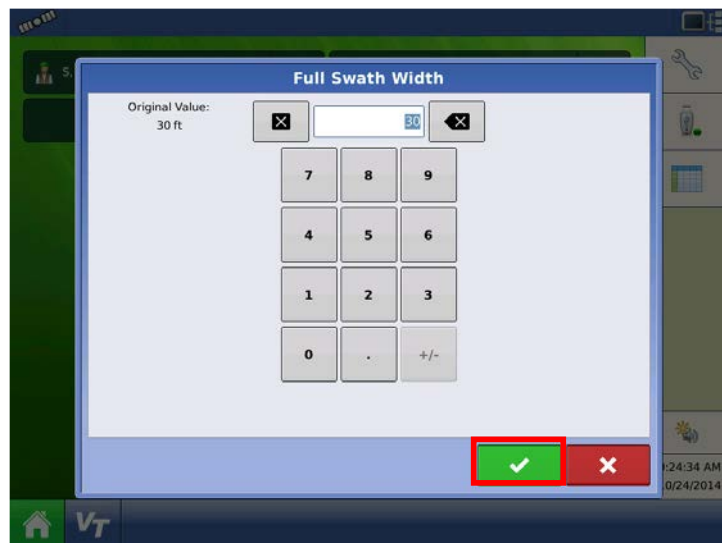
Select the number of boom sections on the machine

Press the right arrow when finished

02/11/2015	JAS		Hardi North America	Drawer.:	
				Approver.:	
Date	Ini.	Correction	HARDI SP Controller Setup		



Next, enter in the swath width of the boom.
Press the calculator to enter in the correct value.



Enter the correct value and press the green check box



Press the right arrow

02/11/2015	JAS		Hardi North America	Drawer.:	
				Approver.:	
Date	Ini.	Correction	HARDI SP Controller Setup		

Equipment Setup Wizard: Section Configuration

Enter Boom Section Widths from Left to Right

Section	Swath Width (ft)
1	20.0000
2	20.0000
3	20.0000
4	20.0000
5	20.0000
6	20.0000

TIP: The implement is divided into equal section sizes by default. To modify the sections, press the keypad button for each section that needs to be changed.

Navigation buttons: Left Arrow, Right Arrow (highlighted), Cancel (X).

Time: 1:24:39 AM 0/24/2014

Ensure that the swath width for each section is correct before pressing the right arrow to continue

Equipment Setup Wizard: Application Point Offset

Enter Distance from Rear Axle to Application Point

0 ft Behind

Navigation buttons: Left Arrow, Checkmark, Cancel (X).

Time: 1:24:43 AM 0/24/2014

Enter in the distance from the rear axle to the application point

Presidio- 6.5ft

Saritor- 8ft

Once you enter in the value, press the green check box that will appear

Vehicle Wizard: Application Channels

Type	Controller	Channel	Container
Liquid	Hardi(11)		Main Tank

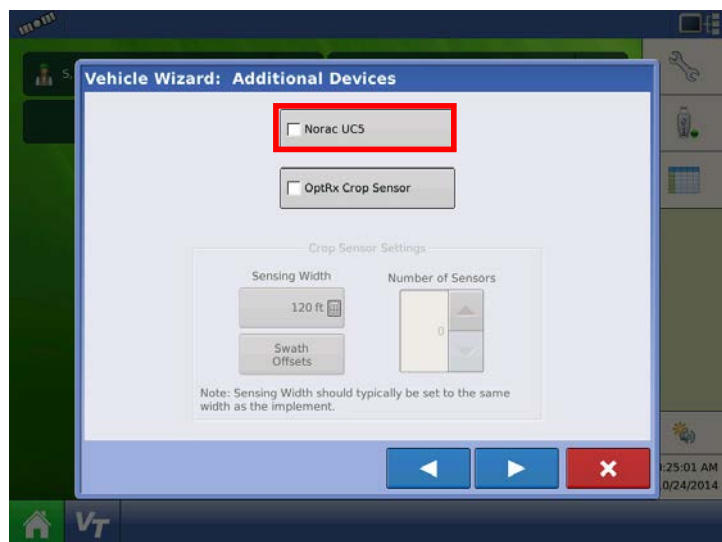
Buttons: Liquid Application, Direct Injection, Granular Application, Remove.

Navigation buttons: Left Arrow, Right Arrow (highlighted), Cancel (X).

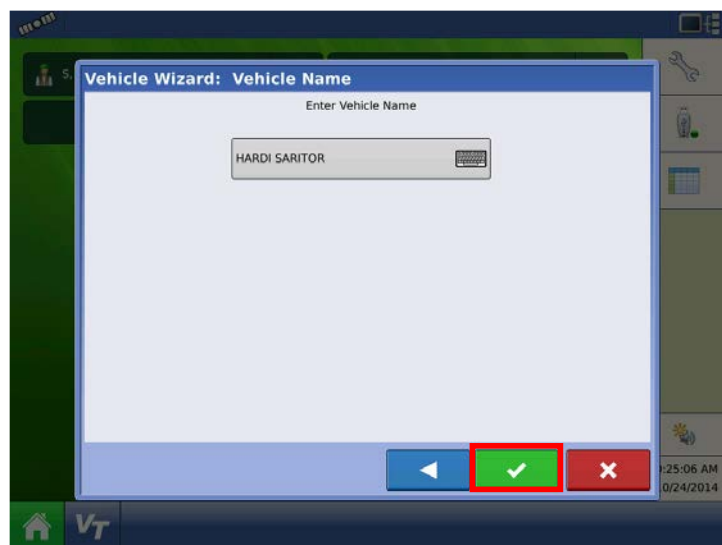
Time: 1:24:56 AM 0/24/2014

At this screen, press the Right Arrow

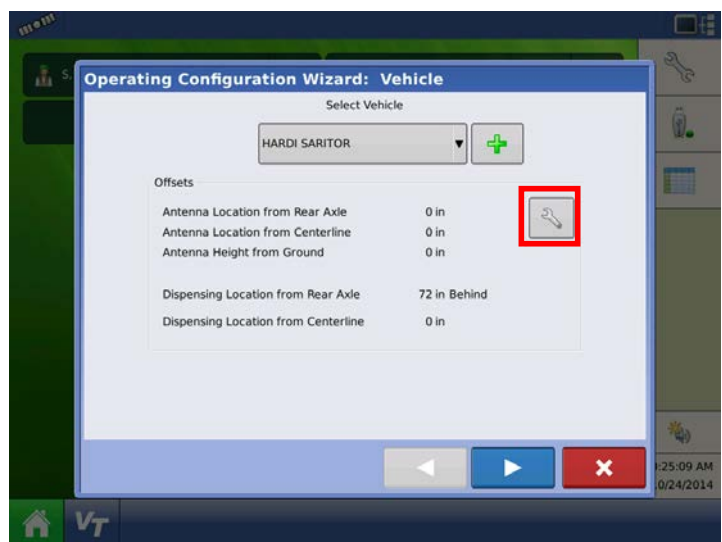
02/11/2015	JAS		Hardi North America	Drawer.:	
				Approver.:	
Date	Ini.	Correction	HARDI SP Controller Setup		



Mark the check box next to NORAC if the machine is equipped with one

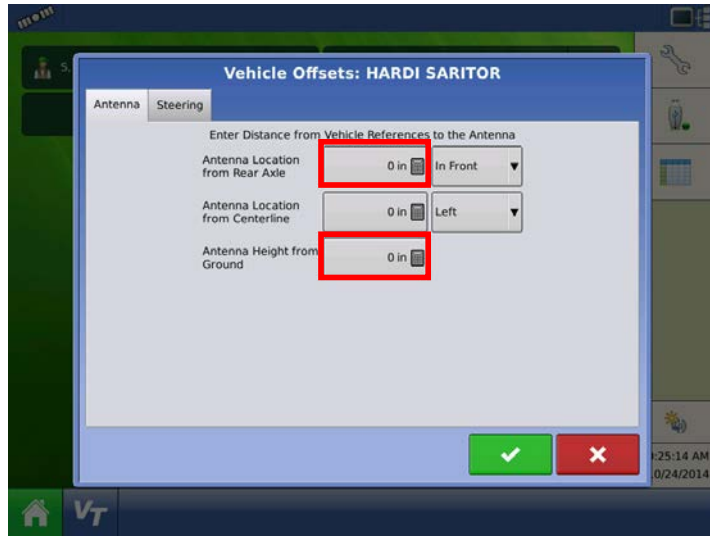


Check that the suggested vehicle name is correct and press the green check box to proceed.



Press the wrench to edit the vehicle offsets

02/11/2015	JAS		Hardi North America	Drawer.:	
				Approver.:	
Date	Ini.	Correction	HARDI SP Controller Setup		



Enter in the antenna offsets on this screen.

If the machine is equipped with a Paradyme antenna, ignore this step.

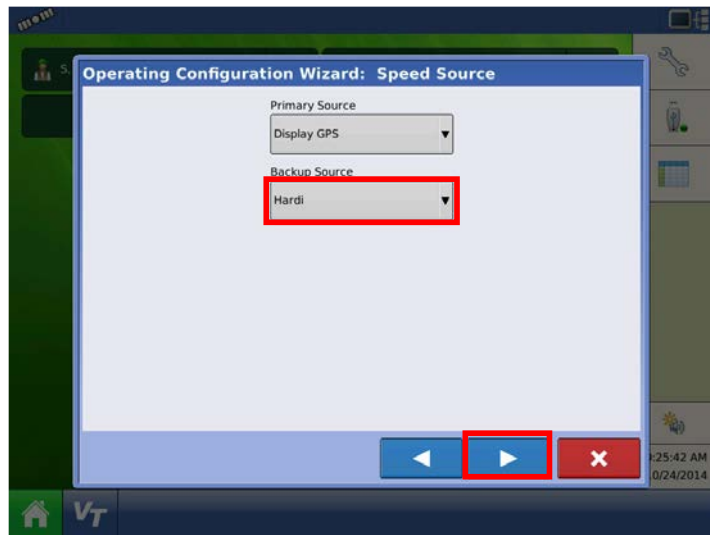
Presidio:

Antenna from rear axle- 78"
Antenna from centreline- 0"
Antenna from ground- 163"

Saritor:

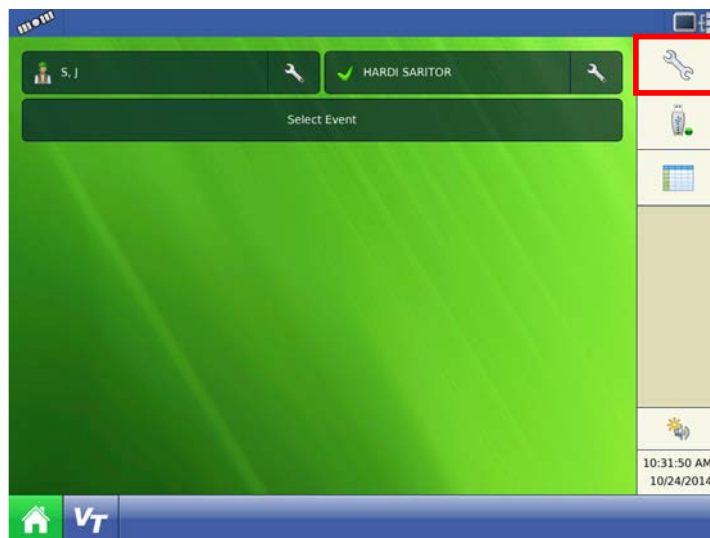
Antenna from rear axle- 120"
Antenna from centreline- 0"
Antenna from ground- 168"

Press the green check box when finished



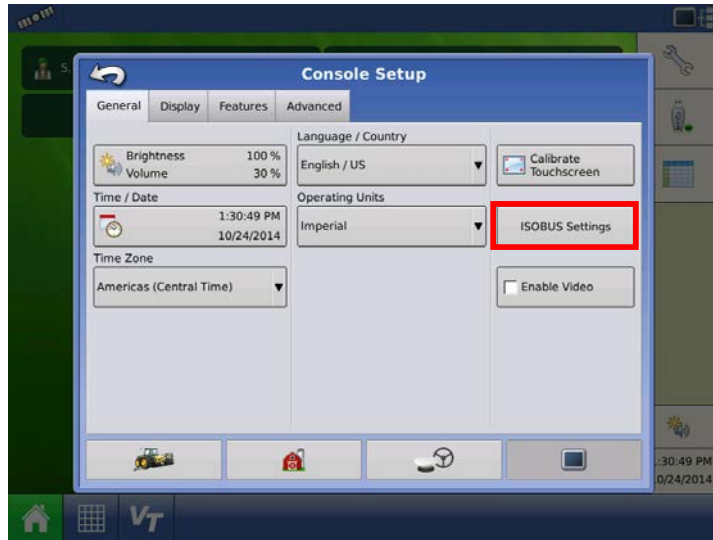
The primary speed source will be GPS; the backup source will need to be changed to HARDI.

Press the right arrow



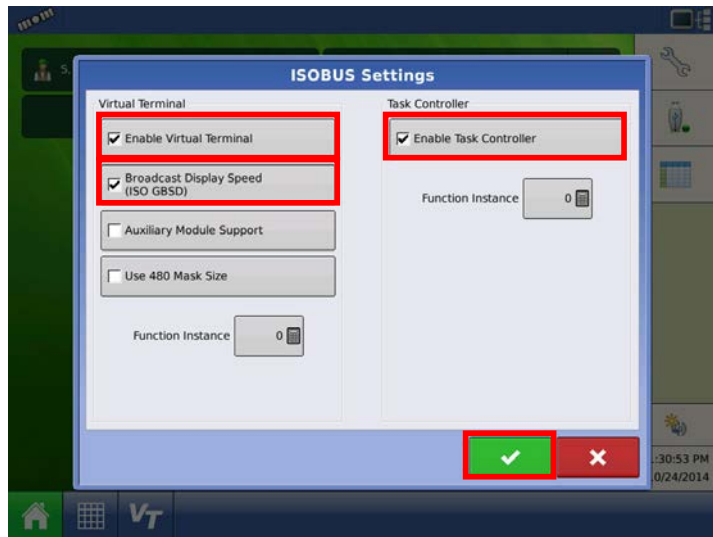
Press the wrench

02/11/2015	JAS		Hardi North America	Drawer.:	
				Approver.:	
Date	Ini.	Correction	HARDI SP Controller Setup		



Press the display tab

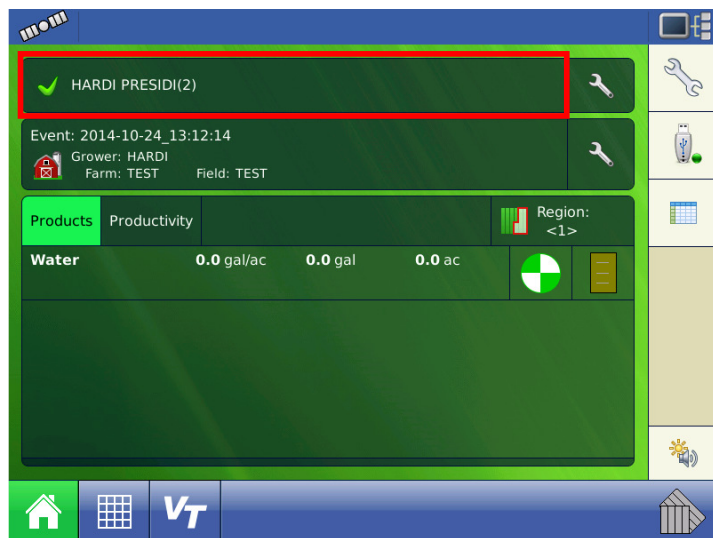
Press "ISOBUS Settings"



Make sure that the appropriate check boxes are checked:

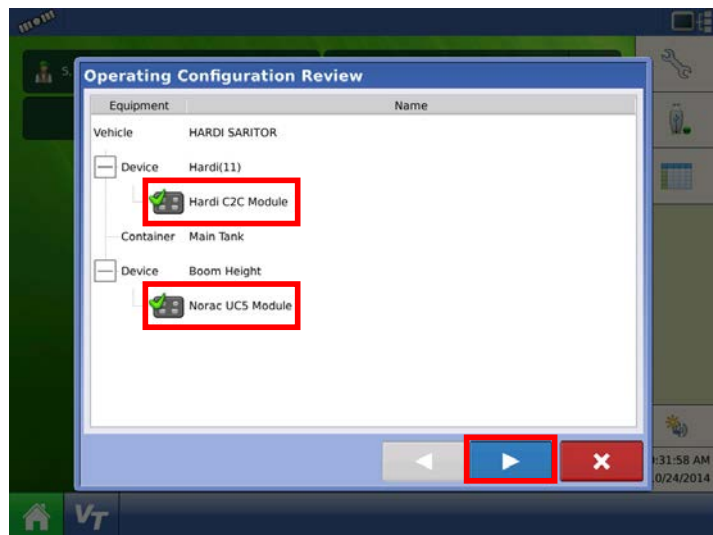
- Enable Virtual Terminal
- Broadcast Display Speed
- Enable Task Controller

Press the green check box when finished and navigate back to the home screen



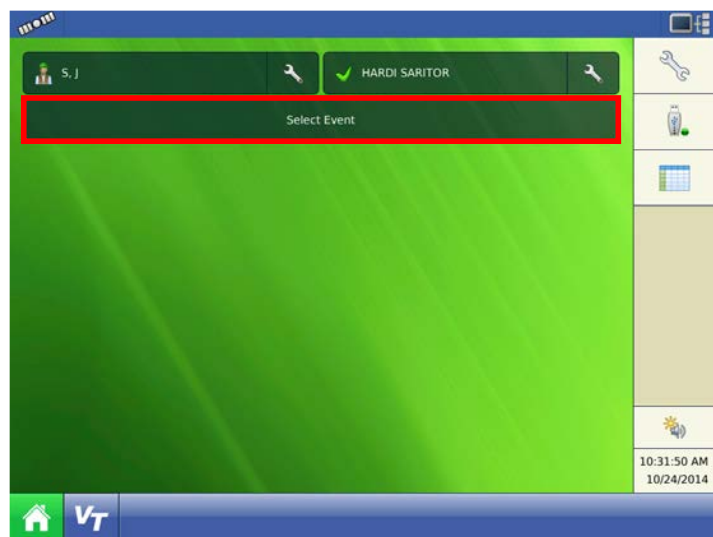
Make sure that the machine configuration that you have created is in the top window. The first time setting up the machine it will usually say "Guidance"

02/11/2015	JAS		Hardi North America	Drawer.:	
				Approver.:	
Date	Ini.	Correction	HARDI SP Controller Setup		

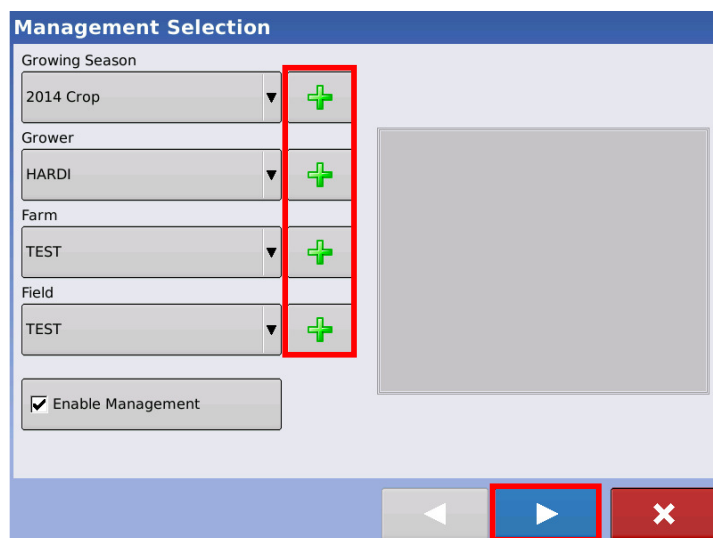


When you select the configuration you created, be sure that all the modules have a green check box next to them

Press the right arrow



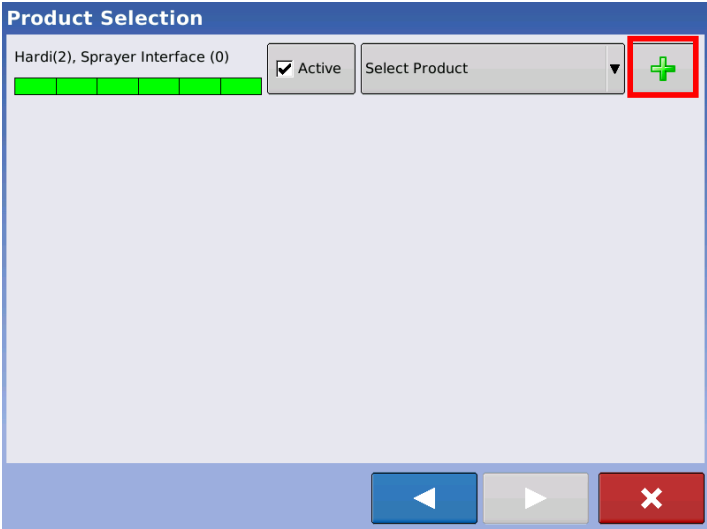

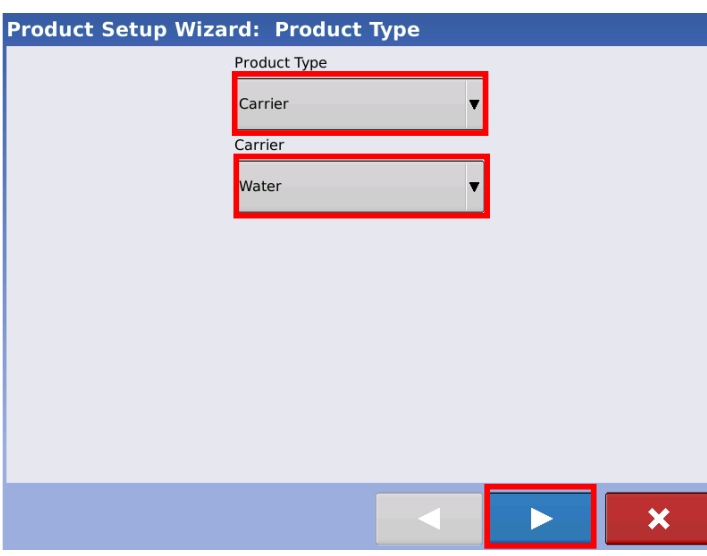
Press "Select Event"



Enter in the information to the left under each of the Grower, Farm, and Field windows by pressing the appropriate "+" key

Once these are all filled in, press the right arrow

02/11/2015	JAS		Hardi North America	Drawer.:	
				Approver.:	
Date	Ini.	Correction	HARDI SP Controller Setup		

	<p>Press the “+” key to create a product</p>
	<p>Select “Application Product”</p>
	<p>Change the “Product Type” to “Carrier”</p> <p>Once the lower window changes to “Carrier” select “Water” if it has not defaulted to it already</p> <p>Press the right arrow</p>

02/11/2015	JAS		Hardi North America 	Drawer.:	
				Approver.:	
Date	Ini.	Correction		HARDI SP Controller Setup	

Product Setup Wizard: Units

Select Product Units

Units
gallons ▼

◀ ▶ ✕

Change the controlling units to “Gallons”

Press the right arrow

Product Setup Wizard: Product Name

Product Name
Water

◀ ✓ ✕

Press the green check box

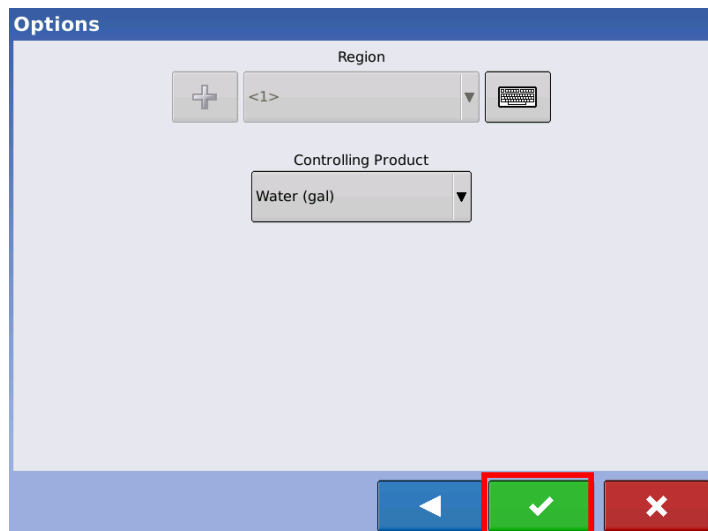
Product Selection

Hardi(2), Sprayer Interface (0) ☒ Active Water +

◀ ▶ ✕

Press the right arrow

02/11/2015	JAS		Hardi North America	Drawer.:	
				Approver.:	
Date	Ini.	Correction	HARDI SP Controller Setup		



Press the green check box



The display should look very similar to the one to the left

Press the mapping tab



Your screen should look similar to the one on the left

If you have NORAC you should see some sensor data

Make sure the HARDI boxes are in the lower left/right

NOTE: If the lower left/right corners of the display are blank, press each of the four blank areas individually to bring up a new window allowing you to select the function you want setup. This will be the case with display SW 6.0 or later.

02/11/2015	JAS		Hardi North America	Drawer.:	
				Approver.:	
Date	Ini.	Correction	HARDI SP Controller Setup		